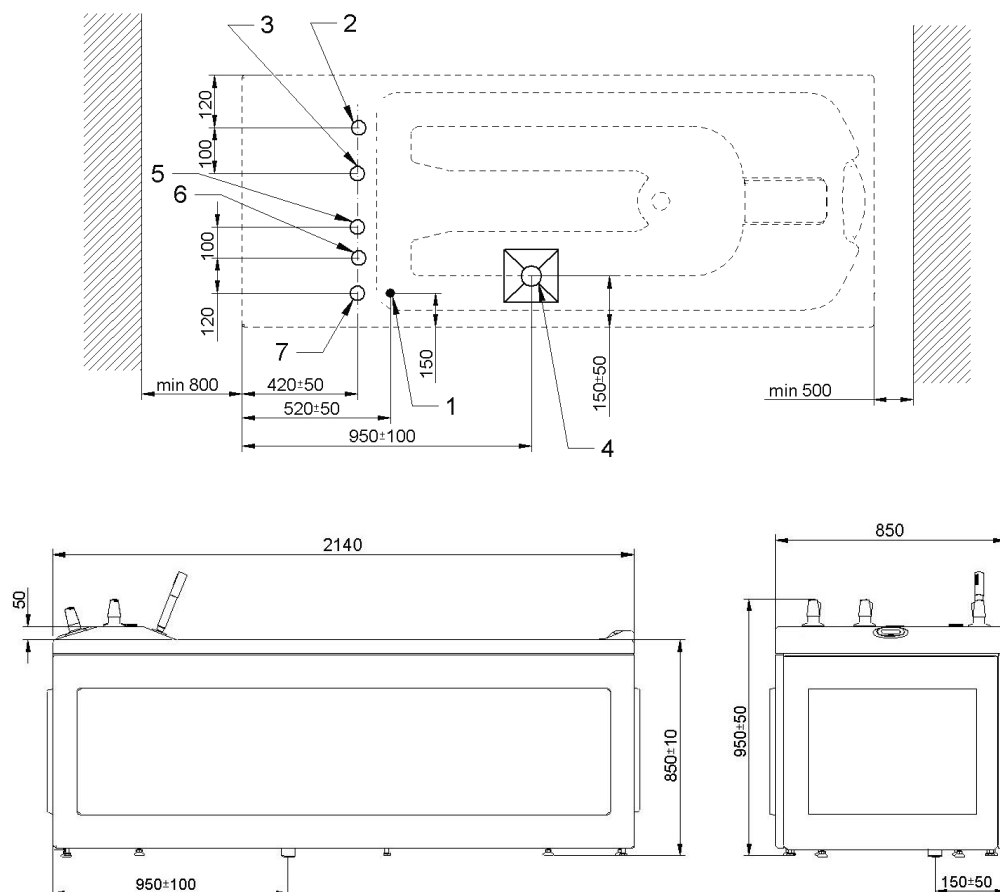


Therapeutic bathtub for automatic zone hydromassage ORIONMED Balneo

Meden-Inmed Sp. z o.o.
ul. Wenedów 2
75-847 Koszalin
tel. (94) 347-10-40
fax (94) 341-10-41
<http://www.meden.com.pl>



ORIONMED Balneo bathtub installation diagram (all dimensions in mm)

In the location of bathtub siting, in the floor there needs to be installed:

- (1) – power supply connection - look at section "Connection to the 230V ~ 50 Hz mains electricity" below,
- (2) – cold water supply, led out of the floor to a height of 10 cm, finished with an external 3/4" thread,
- (3) – hot water supply, max 60°C, led out of the floor to a height of 10 cm, finished with an external 3/4" thread,
- (4) – draining of the used water to the sewerage (grate with siphon) with drain hole minimum DN 100 with the minimum discharge capacity 3,5 l/s, the water drain is finished with installation elbow D 50,
- (5) – cold brine supply led out of the floor to a height of 10 cm, finished with 3/4" external thread,
- (6) – hot brine supply led out of the floor to a height of 10 cm, finished with a 3/4" external thread,
- (7) – connection pipe supplying water saturated with CO₂ led out of the floor to a height of 10 cm, finished with external thread 3/4" (option).

Recommendations:

- the internal diameter of the utility supply system is min. DN20 over the entire length,
- maximum pressure of the supply media - 6 bar (0.6 MPa),
- place easily accessible valves (e.g. on the wall) in the room to cut off the supply to the unit so that personnel can quickly access the shut-off valves in the event of an installation fault or uncontrolled water leakage from the unit installation.

For the sanitary reasons it is not recommended to permanently connect the drainage installation of the bathtub with the building's sewerage system.

Bathtub has been properly levelled during the manufacturing process. In case of an uneven floor in the bathtub siting location, the bathtub levelling should be done with the outer levelling feet, so the central foots stand firmly on the floor.

The rooms in which balneological treatments are carried out should be equipped with bottom gas overflows and in mechanical supply and exhaust ventilation with bottom exhaust to ensure increased air exchange exceeding two times per hour.

Connection to 230 V/50 Hz mains electricity

The bathtub for automatic zone hydromassage ORIONMED Balneo must be permanently connected to the electrical system.

The connecting of the bathtub to the electricity ~230 V/50 Hz should be carried out by an authorised electrician. One of the warranty conditions is a validation of the electricity supply connection of the bathtub by an authorized electrician.

The bathtub's power supply circuit should have:

- power supply cable led from the floor with a minimum cross-section 3x4 mm², length 1,5 mb.,
- a residual current device with rated residual current ≤ 30 mA,
- an over-current protection unit with rated current of 25 A and type C characteristics,
- a bipolar power switch that disconnects all phases (between the bathtub and the residual current circuit breaker in the room where the bathtub is operating) with a minimum access of 3 mm contacts, in a location that allows easy and quick access by personnel in the event of an emergency. If the switch is not visible from the position of normal use by the operator or service personnel, additional means must be provided to lock in the off position.

The electrical installation to which the device is connected must conform to the requirements of the applicable legislation (PN-HD 60364-7-701, PN-HD 60364-7-710).